

# Constructing a paper: The article template for "Constructions"

Some Author<sup>1</sup>, Another Author<sup>2</sup> & Yet Another Author<sup>2</sup>

<sup>1</sup> University of Somewhere <sup>2</sup> Random University

## Abstract

This the article template for the journal “Constructions”. Its goal is to make it as easy as possible for authors to typeset their papers in  $\text{\LaTeX}$ . For users with limited  $\text{\LaTeX}$  experience, we recommend using Overleaf (<https://www.overleaf.com>). To start working on your paper in Overleaf, just make a copy of this template and replace the text of this tutorial by the text of your paper.

## 1 Basics

“Constructions” is a platinum open-access journal: We do not charge author processing fees, and we do not pursue any commercial interests. However, this also means that the journal is run on a voluntary basis, and we do not have money to pay professional typesetters. We therefore have to ask the authors to do the typesetting of their papers. To facilitate this task as much as possible, we provide this  $\text{\LaTeX}$  template. Just open the template in the  $\text{\LaTeX}$  editor of your choice and start working in the document `main.tex` by replacing the text of this short tutorial with the text of your own paper. You can just work as would in a simple text editor; if you have never worked with  $\text{\LaTeX}$ , there are a few commands you should know:

- If you want to use *italics*, you have to wrap the text to be italicized in the command `\textit{...}`
- If you want to use **boldface**, use the command `\textbf{...}`
- For adding ‘single’ and “double” quotes, please use a single or double grave accent (``` or ````) for opening the quote and the apostrophe `'` or the regular double quote `"` to close it.
- To start a new **section**, use `\section{...}` If the section should not be numbered (which is usually the case for Acknowledgment sections and the references), add an asterisk: `\section*{...}`
- Optionally you can add a label to the section using `\label` and then refer to it using the `\ref` command, e.g.  
`\section{Linguistic examples} \label{sec:linguex}`  
assigns the label *linguex* to Section 2, and `\ref{sec:linguex}` will show up as 2.

- If you want to make a bulletpoint list like the one you’re reading right now, use:

```
\begin{itemize}
  \item first item
  \item second item
  \item etc.
\end{itemize}
```

- For linguistic examples, see below.
- Footnotes can be inserted using `\footnote{...}`.<sup>1</sup>
- $\TeX$  hyphenates automatically, and usually the hyphenation feature is pretty good. If you want to override the default hyphenation of a word, add it to the `\hyphenation{}` word list towards the beginning of the `main.tex` document – that’s what I’ve done for the word *numb-ered* a few bulletpoints above (just for expository reasons of course, not because I want to change English hyphenation rules...). If you have very long words, we recommend to insert a **soft hyphen**, i.e. a hyphen that is not shown unless there is a line break, as `inthisverylongword`. You can insert a soft hyphen by typing `\-`, e.g. `hy\ -phe\ -na\ -tion`.

## 2 Linguistic examples

For linguistic examples, we use the “linguex” package. The package is relatively easy to use, see the manual for examples: <https://ftp.rrze.uni-erlangen.de/ctan/macros/latex/contrib/linguex/doc/linguex-doc.pdf>. Just insert `\ex.` to start an example, and use `\\` for line breaks. You can refer to examples like example (1) below by adding labels to the individual examples using the `\label{...}` command and referring to the label you chose via `\ref{the_label}`. In this way, you can also refer to sub-examples like (1a) and (1b).

- (1) a. *Das ist ein Beispiel.*  
 This is an example.  
 ‘This is an example.’
- b. *Ein Beispiel ist das.*  
 an example is this  
 ‘This is an example.’

## 3 Figures

Inserting figures is easy, while it can be a bit harder to place them where you would like to see them. The [Overleaf tutorial](#) provides a good starter. Usually you can just work with the code in this template. Please make sure that you have high-resolution figures (at least 300 dpi). Like the linguistic examples discussed above, you can label figures and then refer to them using `\ref{the_label}` or, if you want to add the word “Figure” (or “Table”, in the case of tables) automatically,

---

<sup>1</sup> Duh!

\autoref{the\_label}.

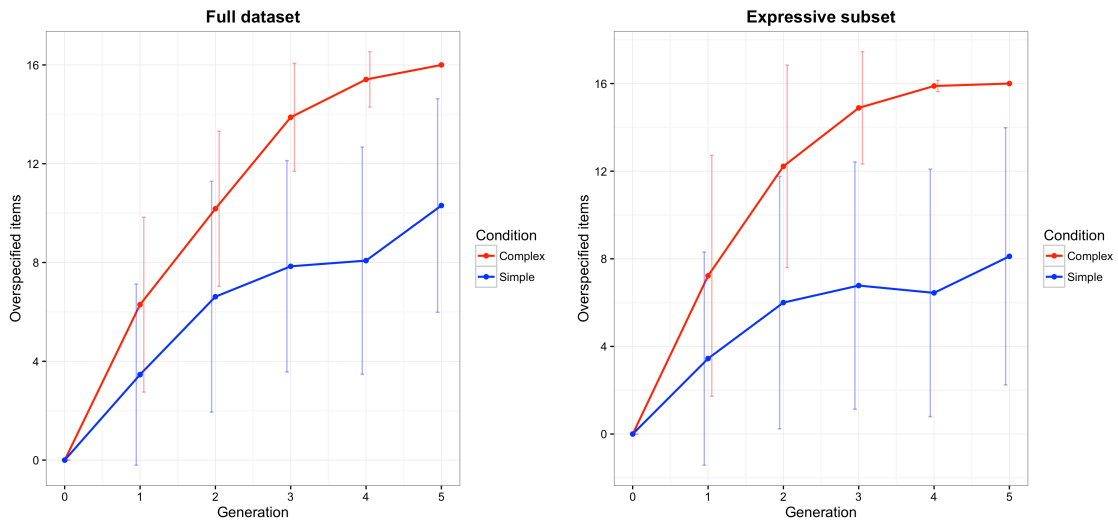


Figure 1: A sample figure

The `float` package can be used to customize the position of figures and tables. For example, Figure 1 and Figure 2 are forced to appear at a specific position in the text using the `[H]` command. If there is no reason to position a figure or table at a specific point in the text, you can also use a less strict configuration and let `TeX` choose the position automatically. If you use `[H]` and start a new paragraph afterwards, please make sure to start the paragraph with the command `\noindent` to avoid indentation.

Fathers and sons, standardized (z-scored)

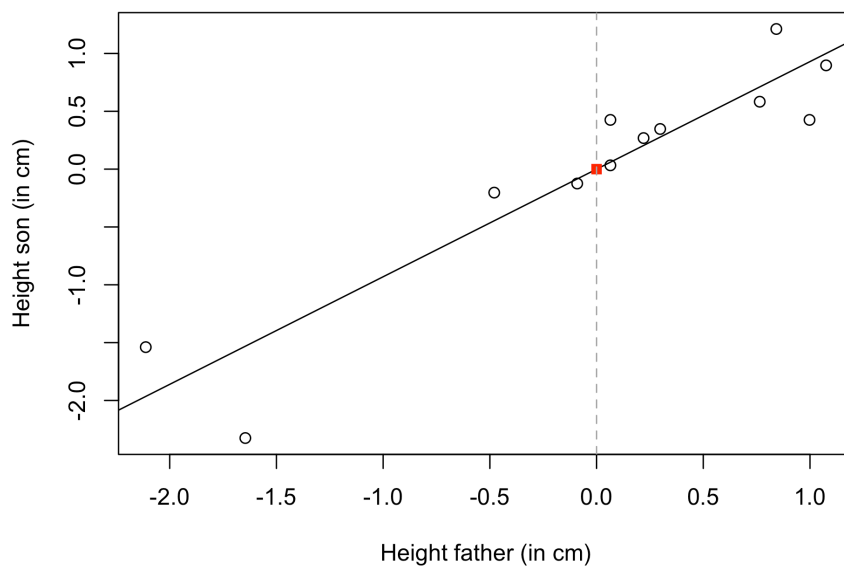


Figure 2: Another sample figure

## Reusing figures

If you reuse figures from published work, including your own, please make sure that you are allowed to do so. In most cases, you will need to obtain written permission from the copyright holder (usually the publisher) to re-use figures, unless the original paper has been published under an open license such as CC-BY. We generally recommend to double-check if re-using the figure is actually necessary. If it is, please make sure to obtain written permission for re-using the figure. When re-using figures that cannot be published under a creative commons license, please add a short statement to the license information at the bottom of the paper, e.g. “Figure x from Author (Year: page), re-used by permission from Calisota University Press, is excluded from this license.”

## 4 Tables

Adding tables is, admittedly, one of the more challenging aspects of  $\text{\LaTeX}$  typesetting. Luckily, there are a few resources that help you generate tables, such as <https://www.tablesgenerator.com/>.

bla	blubb
blah	blub

Table 1: A very simple table

We recommend to use the `tabularx` package, which is a bit more complicated to use than the normal “tabular” environment, but it gives you more flexibility in customizing the tables, and makes it easier to print it in text width. In the `localstuff.tex` file, we have defined the column types L (left-aligned), C (centered), and R (right-aligned) so you don’t have to use the full commands that `tabularx` usually requires. In the simplest case, therefore, constructing a table is as easy as in the source code of Table 1. For more elaborate tables in which some rows and columns are merged, check the source code of Table 2.

Col1	Col2	Col3
blubb	blibb	2
Lorem ipsum dolor sit amet,		bla
Lorem ipsum dolor sit amet,		
bla	blabb	22

Table 2: A more complicated table

## 5 Special characters

From 2025 onwards, *Constructions* uses the open font **Charis SIL** by default, which supports a broad array of Unicode characters. With the `\symbol{...}` command, you can easily add more Unicode characters using a font of your choice, e.g. `{\fontspec{Symbola}\symbol{"1F5A4}}` will be displayed as ♥.

## 6 Citations and references

“Constructions” follows the [Unified Style Sheet for Linguistics Journals](#). Working with  $\LaTeX$  and BibTeX, you don’t have to do the formatting manually, though. All references you cite should be in the bibliography.bib file in BibTeX format. We strongly recommend using a reference manager like [Zotero](#). Zotero allows you to copy and paste entries in BibTeX format, thus making it much easier to work with  $\LaTeX$ .

For inserting citations, use  $\LaTeX$ ’s citation syntax:

- Use `\citep{...}` for inserting citations in parantheses, e.g. (Doe 2021).
- Use `\citet{...}` to insert citations in the format Author/s (Year), as in Doe (2021).
- Use `\citeauthor{...}` and `\citeyear{...}` if you just want to cite the author or the year, without parantheses. This can be helpful if you cite something within parantheses (as in this example, see Doe 2022).
- If you want to use a possessive ’s in references, you can use the custom command `\citegen{...}` defined in the localstuff.tex file, as in: Doe’s (2022) definition of constructions.

### Troubleshooting

If there are problems with the bibliography, this can have several reasons:

- Some Zotero plugins (like Better BibTeX) change the “Year” field in the BibTeX entry to “Date”. In this case, you’ll have to change all instances of “Date” to “Year” in the bibliography file.
- If you want to keep sentence-internal capitals in the citations (e.g. when quoting German titles, such as Musterfrau 2023), make sure that the relevant words are enclosed in curly brackets. If you export the BibTeX entries from Zotero, you usually won’t have to worry because it does so automatically.

### Obligatory declarations

To meet the requirements of pertinent publication ethics standards, we kindly ask you to add the following declarations at the end of your paper:

- **Conflict of interest statement:** Typically, there will be no conflict of interest to state. If this is the case, just write something like “The author/s has/have no competing interests to declare.”
- **Data availability statement:** If you have analyzed data, please add a link to a public repository in line with our [Open Data Policy](#).
- **Ethics statement:** If you work with sensitive data (including, but not limited to, experiments involving underage participants or data from clinical populations), please add an ethics statement.

## Conflict of interest statement

The authors declare none.

## Data availability statement

The data and analysis scripts for the present paper are available at [[ADD LINK]].


Please note our [Open Data Policy](#). Authors are required to make data and analysis scripts publicly available unless they cannot be published for important reasons (e.g. due to ethical considerations). We recommend a general-purpose repository such as [OSF](#) or subject-specific repositories such as [TroLLing](#). The data should already be shared in the peer-review stage. Some repositories, such as OSF, offer the possibility to generate anonymous view-only links. If this is not an option, you can also upload your data and analysis scripts for review in our submission system and add the repository link afterwards.

## Ethics statement

*(Delete if not applicable)*

The present study was reviewed and approved by [[Full name and affiliation of ethics committee, date and/or reference number of ethics vote]]. All participants provided their written informed consent to participate in this study.

## License

 This work is licensed under a [“CC BY 4.0”](#) license.

*Constructions* uses the CC-BY (“By Attribution”) license by default, i.e. everyone can copy, share, and build upon your paper, given that they give proper attribution. If you prefer a more restrictive license, you can change it in the `localstuff.tex` file, e.g. to

- CC-BY-SA (“Share alike”), i.e. any derivative work has to use the same or a compatible license;
- CC-BY-SA-ND (“No derivatives”), i.e. the work has to be shared under the same or a compatible license, and derivative works such as translations are excluded.

See the [Creative Commons website](#) for more information about the different licenses.

If necessary, please add statements about elements that are excluded from the CC license as described in Section 3.

## References

Doe, Jane. 2022. *This is an example reference*. Somewhere: University of Somewhere Press.

Doe, John. 2021. *This is another example reference*. Somewhere: University of Somewhere Press.

Musterfrau, Gerda. 2023. *Das ist ein deutsches Beispiel*. Düsseldorf: Irgendein Verlag.