

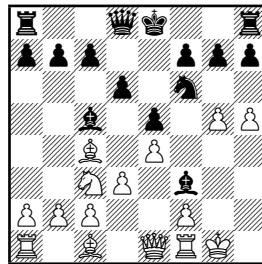
Example: Chess with TeXmate

1 Game with Diagram of Final Board State

□ Dubois
■ Steinitz

London 1862
Giucco Pianissimo – C50

1. e4 e5 2. ♖f3 ♜c6 3. ♙c4 ♙c5 4. 0-0 d6 5. d3 ♜f6 6. ♙g5h6 ♙h4
7. g5 ♙g3 8. h5 ♜xg5 9. h4 ♜x7 10. hxg3 ♜x8 ♙g4 11. ♚e1 ♜d4
12. ♜c3 ♜f3+ 13. gx3 ♙x3 0:1

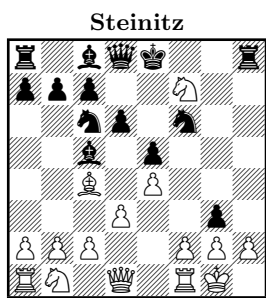


2 Diagrams of Chosen Board States

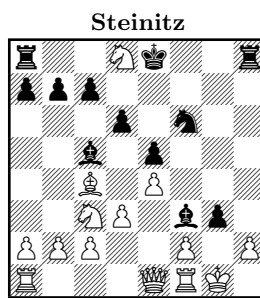
Use the \toD command to request a diagram.

<input type="checkbox"/> Dubois	London 1862
<input checked="" type="checkbox"/> Steinitz	Giucco Pianissimo – C50

1. e4 e5 2. ♘f3 ♘c6 3. ♙c4 ♙c5 4. d3 ♘f6 5. ♙g5?![5. ♘c3]5...d6
 6. 0-0?! h6 7. ♙h4 g5 8. ♙g3 h5! 9. ♘×g5 h4! 10. ♘×f7 h×g3!! (D)
 11. ♘×d8[11. ♘×h8 ♖e7! △♖h7 12. ♘f7 ♙×f2+ 13. ♗×f2 g×f2+ 14. ♙×f2 ♘g4+
 15. ♙g3 ♖f6 16. ♖f3 ♖g7-+]11... ♙g4 12. ♖e1 ♘d4 13. ♘c3□[13. h3 ♘e2+
 14. ♙h1 ♗×h3+ 15. g×h3 ♙f3#]13... ♘f3+! 14. g×f3 ♙×f3 (D) 0:1



Dubois
10... h×g3!!



Dubois
14... ♙×f3